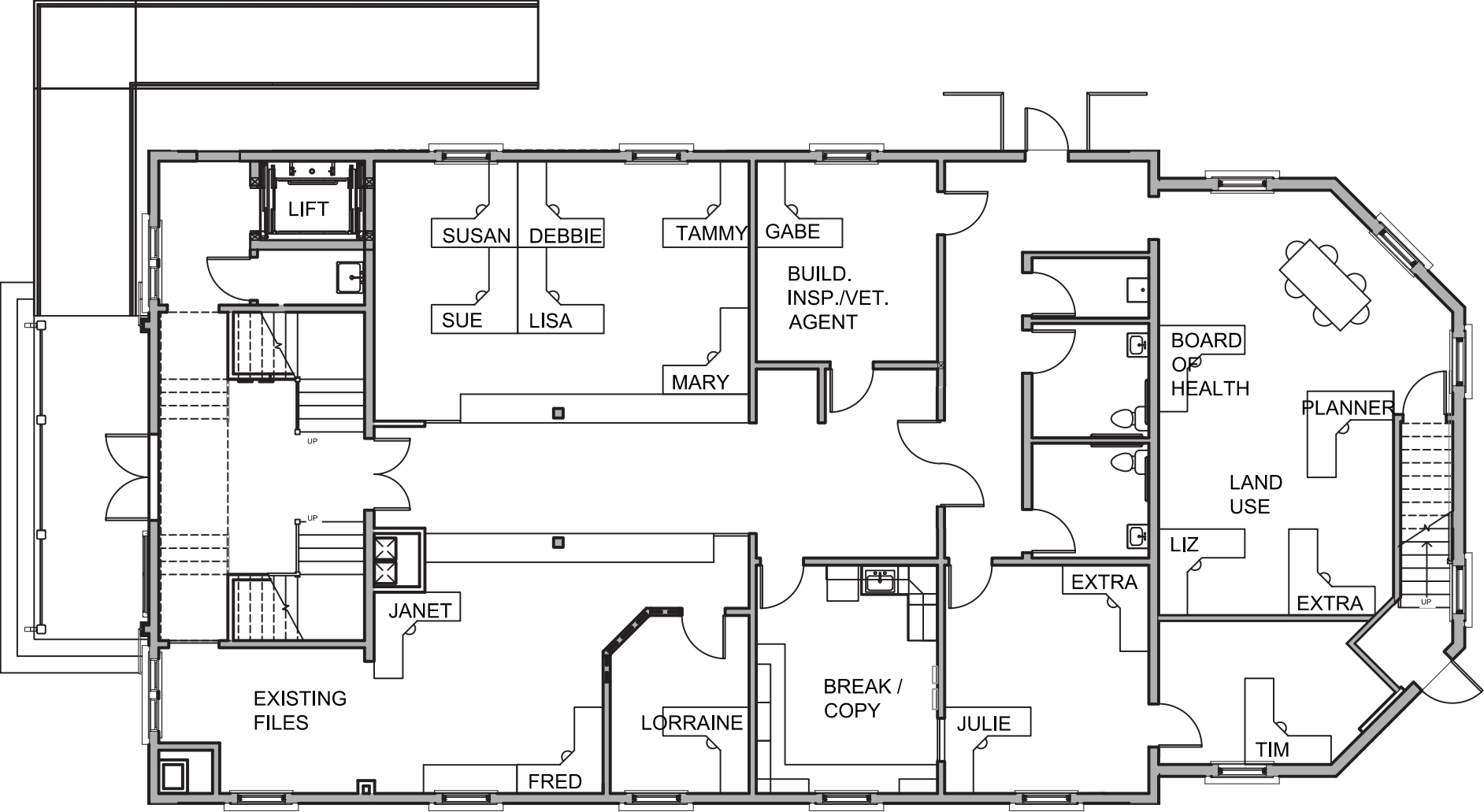
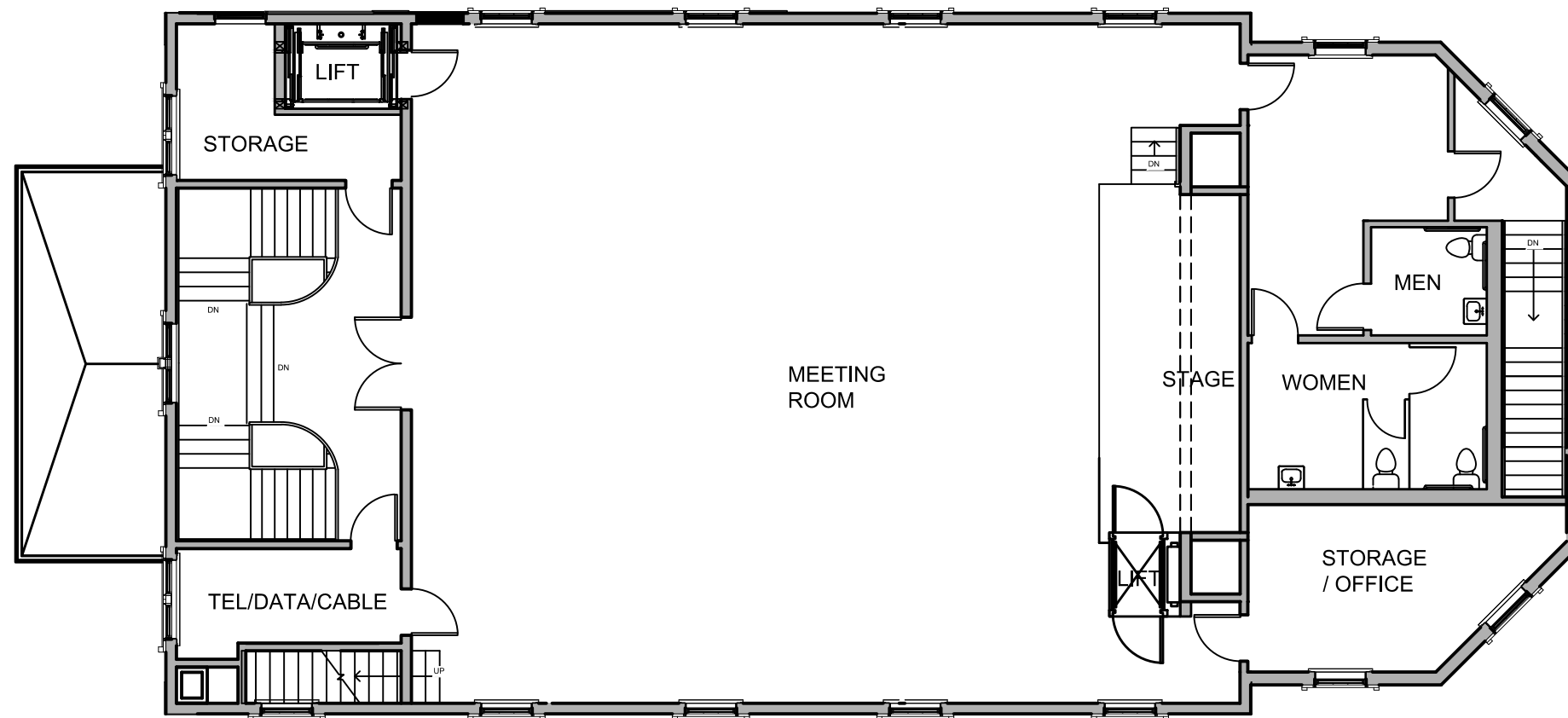


Option 1b



First Floor Plan Existing Walls Lift Location 2
3/21/14

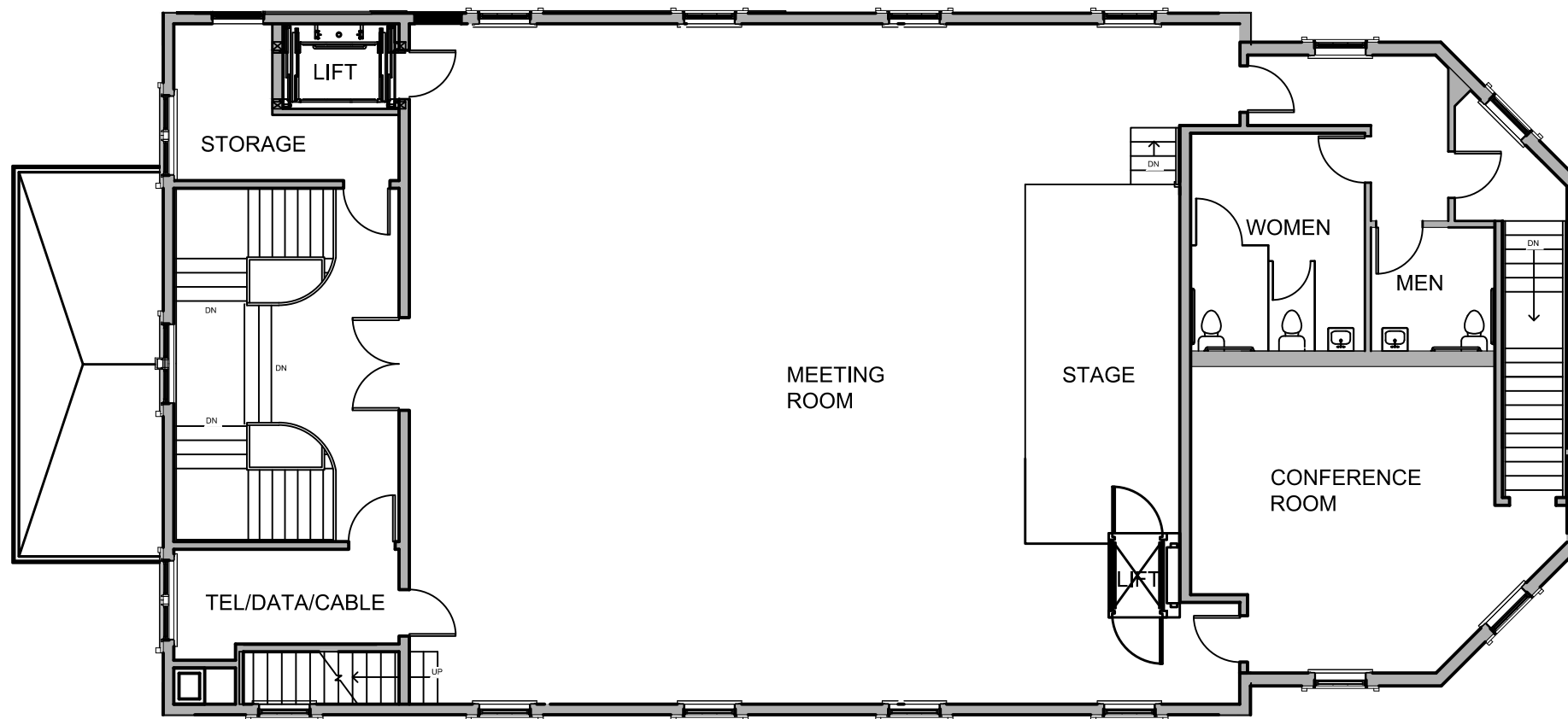
Option 1b



- Existing Stage apron shown
- Approx. 9' deep stage shown
- Uses existing Proscenium
- Provides additional Storage/Office

Second Floor Plan Lift / Location 2 / Stage 1
4/16/14

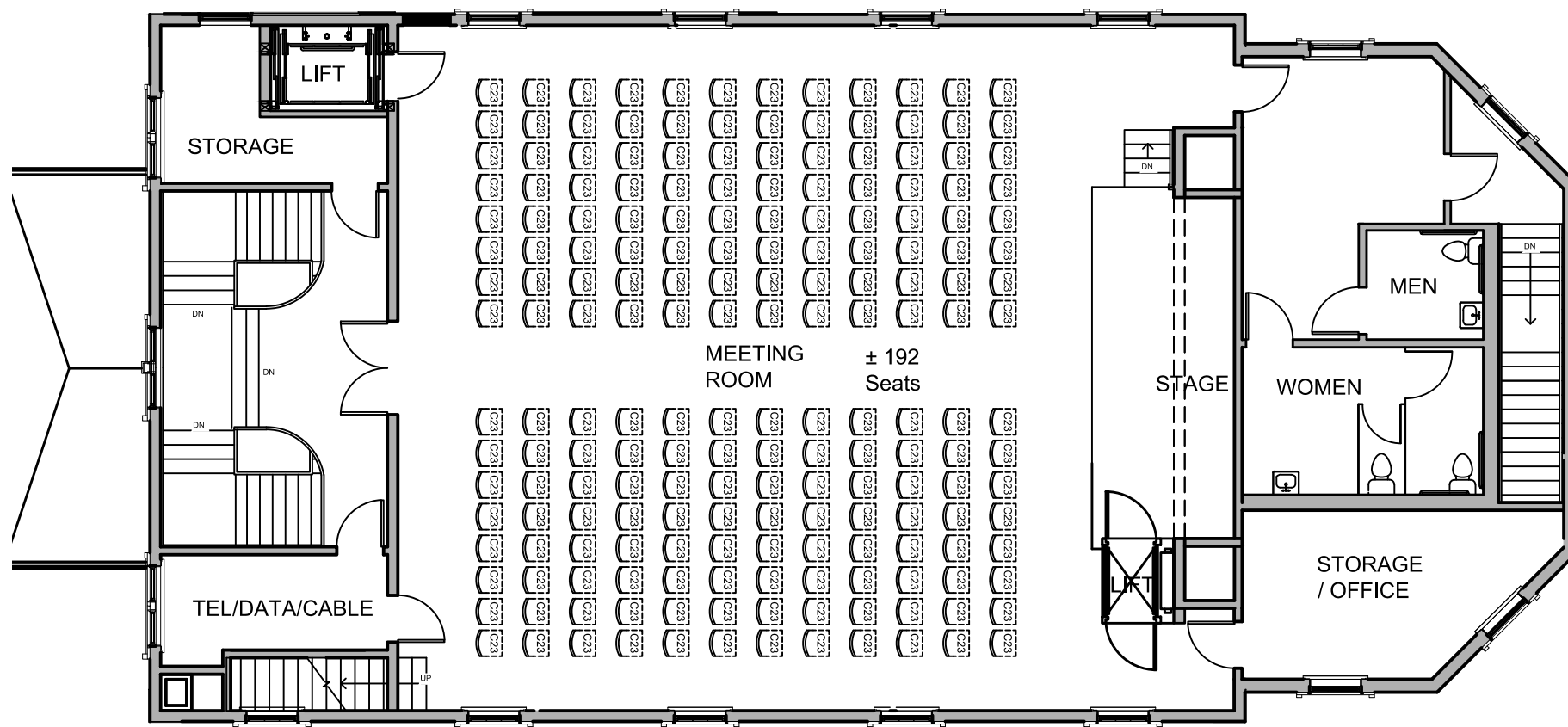
Option 1b



- Stage apron extended into room
- Approx. 10' deep stage shown
- Existing Proscenium on back wall
- Provides larger Conference Room

Second Floor Plan Lift / Location 2 / Stage 2
4/16/14

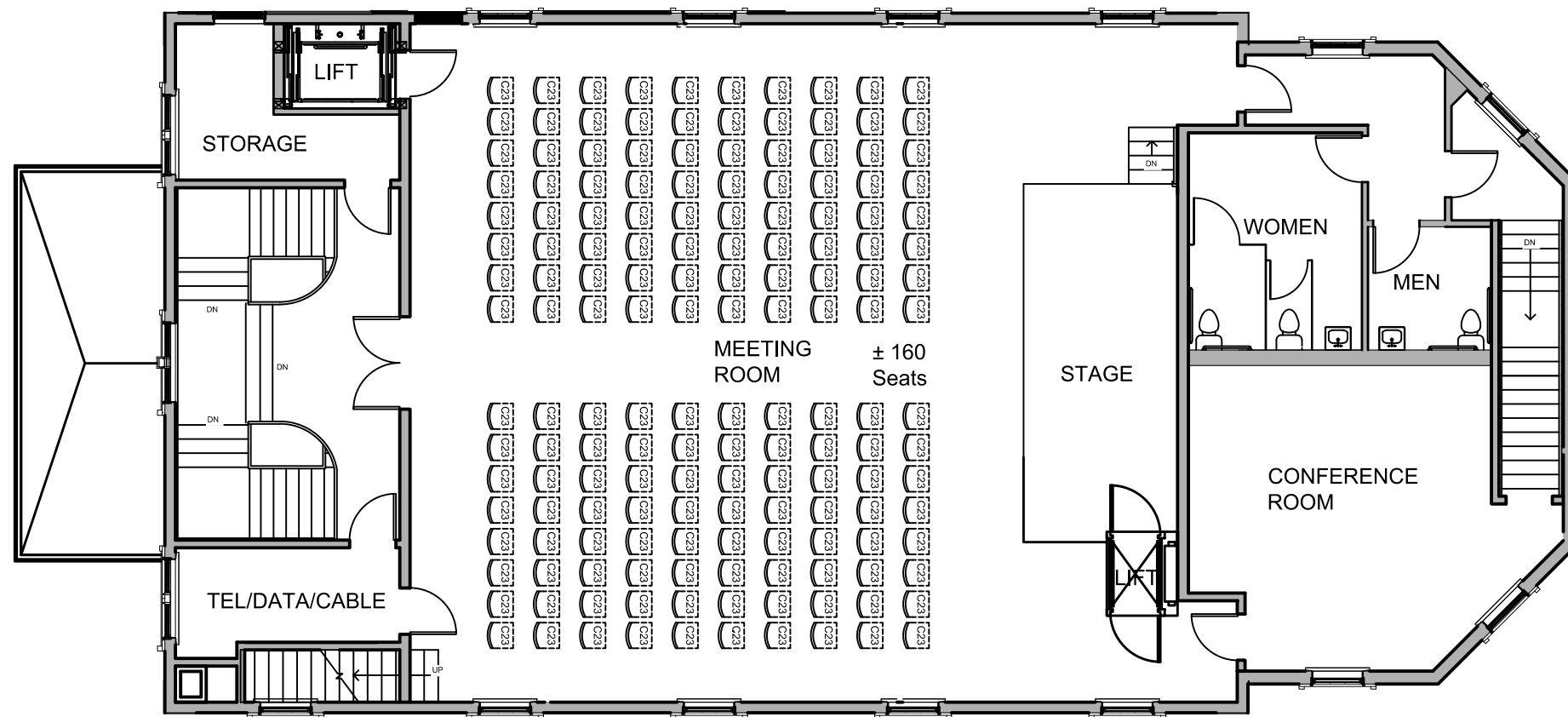
Option 1b



- Existing Stage apron shown
- Approx. 9' deep stage shown
- Uses existing Proscenium
- Provides additional Storage/Office
- 192 Seats shown

Second Floor Plan Lift / Location 2 / Stage 1
4/17/14

Option 1b



- Stage apron extended into room
- Approx. 10' deep stage shown
- Existing Proscenium on back wall
- Provides larger Conference Room
- 160 Seats shown

Second Floor Plan Lift / Location 2 / Stage 2
4/17/14